

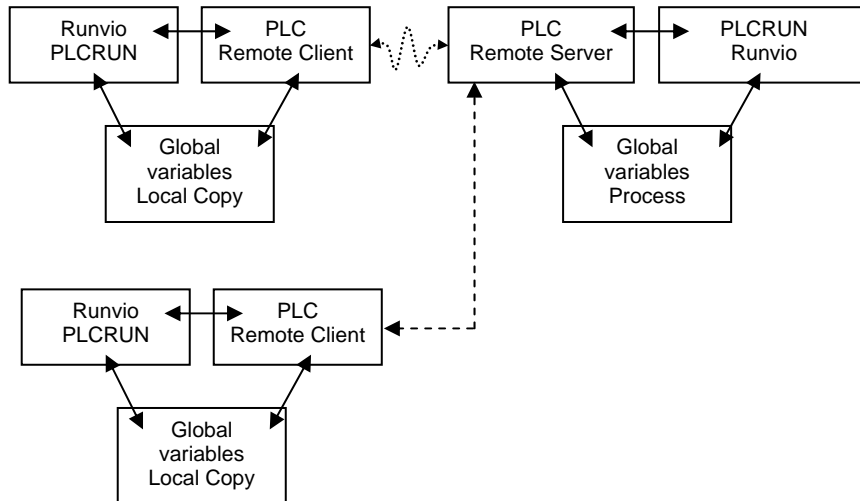
**PLC RemoteControl  
Client /Server  
Peer to peer Network  
TCP/IP**

Version 3.1 or greater

**Description :**

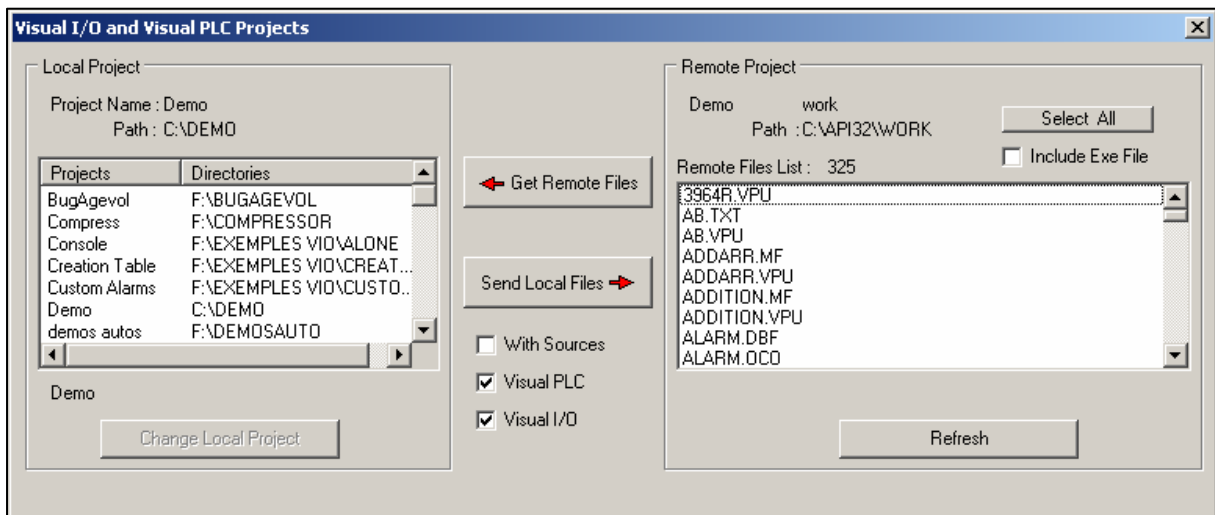
PLC Remote Server and PLC remote Client allow to exchange global variables between PCs by TCP/IP.

The Only restriction is to have the same Global variables declaration on each PC. You can have different applications running but you must have the same Globals variables.



**Other Features**

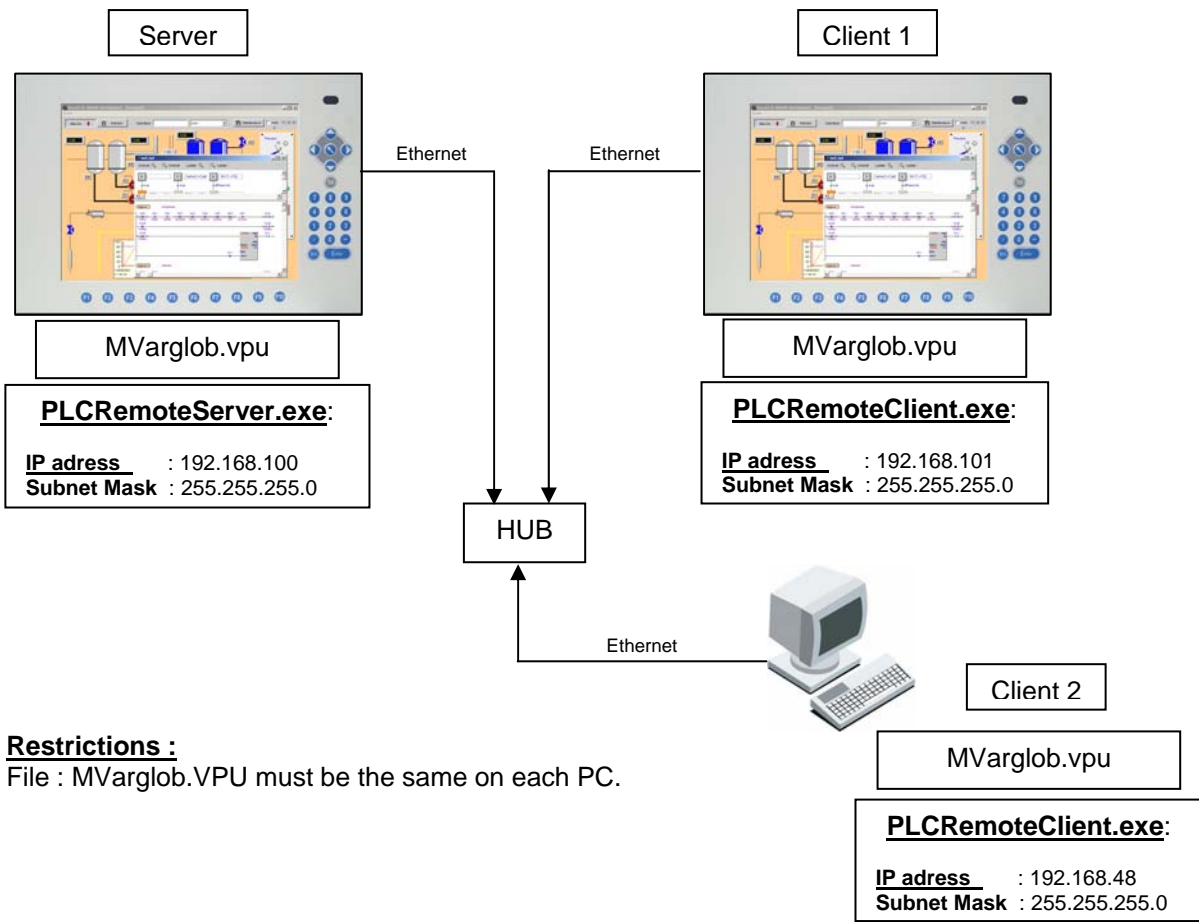
Get or send Project files from client to server. You can develop your application on a PC and send it to the server.



Explorer : To send Files From/to Client/Server

Task Manager : Stop/Run/kill program on the server.

**Example : Architecture Settings**



**Restrictions :**

File : MVarglob.VPU must be the same on each PC.

**PLC Remote Server :**

The image shows the configuration of the PLC Remote Server. On the left, a Windows Start menu is shown with the 'Startup' folder expanded, containing 'PLCRemoteServer' and 'PLCRUN'. On the right, the 'ARSOFT PLC Remote Server' configuration window is displayed. It has the following settings:

- TCP/IP:** Selected. This Server Name: Panelo (192.168.0.100). Server Port: 23.
- Server Password:** A field with asterisks.
- Connect and Minimize on Startup:** Checked.
- Version:** 3.1, **Build:** 3.1.0.0.
- Current Coms:** 124075.
- Licensee:** ARSOFT.

Annotations with arrows point to specific fields: 'IP Adress : 192.168.0.100' points to the 'This Server Name' field; 'Server Port can be changed if necessary' points to the 'Server Port' field; 'Connect and Minimize on startup.' points to the 'Connect and Minimize on Startup' checkbox; and 'Current Coms Count' points to the 'Current Coms' field.

## PLC Remote Client Settings

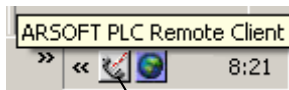
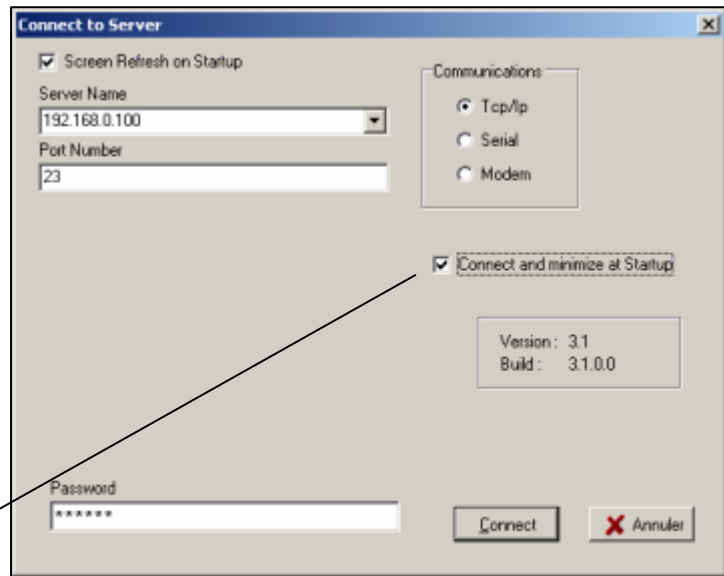
Server Name (or IP adress) :

192.168.0.100 is the Ip adress of the server.

Port Number : Same as Server.

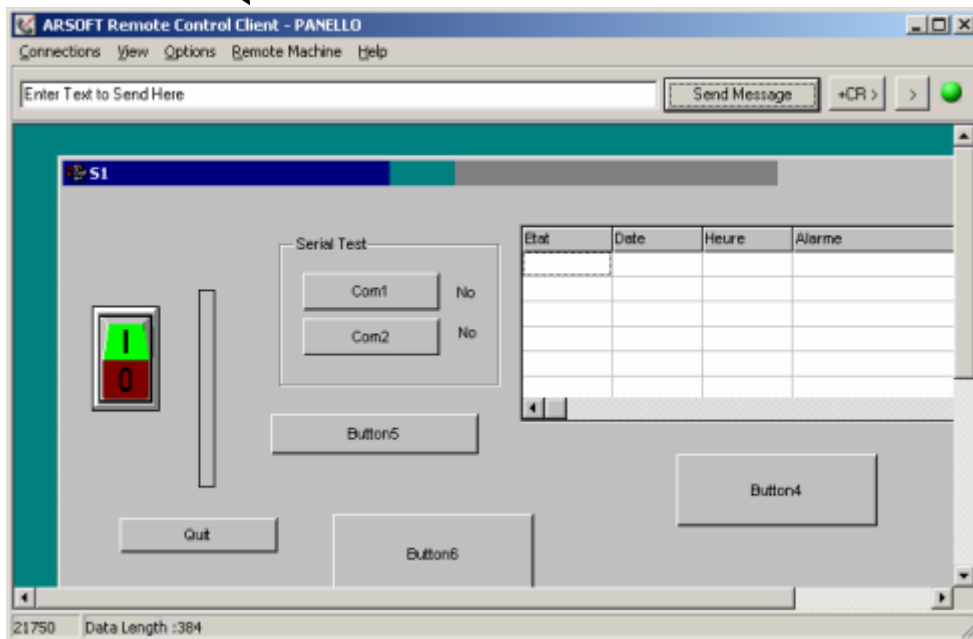
Connect and Minimize on startup for auto connection when PLC remote client is launched.

Password : The same as the server's



*When Connect and Minize on Startup is check, the PLC remote client goes directly on the windows task bar. The Connection to the server is performed in automatic.*

## Monitoring :



Communication counts with the server.

Allow also key pressing, launch programs or send windows messages. Interactive chat ....